

Technical specifications

Energy Pro X (Black)

R32 Full DC Inverter SCOP 5.1

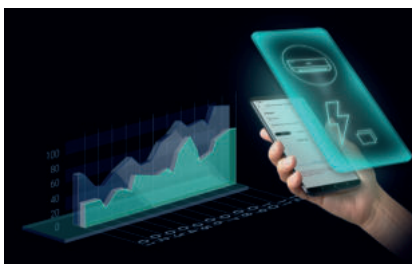
A+++ / A+++



RCH-RTY3 Remote controller



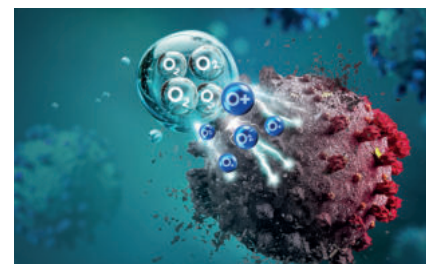
YXE-C01U1(E) Wired controller (optional)



Power statistic display



Smart Eye



HI-NANO sterilization

- 3D Air Intake
- Cooling/Heating capacity display
- HI-NANO Sterilization
- 4-in-1 filter & active carbon filter
- Dual Self clean (indoor/outdoor)
- Anti-bacteria Fin
- Anti-mold
- Smart Eye
- TMS Comfort Control System
- AI Smart
- WiFi Control
- Voice Control
- 4D Auto-swing
- Ceiling & Floor Airflow
- Comfortable Sleep Four Modes
- 18 dB
- Humidity Control
- Timer 24 h
- Super Cool
- 8 °C Heating
- Heating at -22 °C
- Child Lock
- Universal Unit
- Wired Controller optional
- Room card control optional
- Full DC Inverter
- Self-diagnosis
- Outdoor Unit Chasis Heater
- High Energy Efficiency
- Economy mode operation
- Power statistic display

Set model name		QH25XV3B	QH35XV3B
Model name	Indoor Unit	QH25XV3BG	QH35XV3BG
	Outdoor Unit	QG25XV0EW	QG35XV0EW
Model code	Indoor Unit	20013459	20013460
	Outdoor Unit	20009638	20009639
Cooling Capacity	W	2600 (1000-4000)	3500 (1000-4400)
Rated Input-Cooling	W	535 (180-1050)	790 (180-900)
Rated Current Cooling	A	2.5	3.5
Heating Capacity	W	3200 (1600-4200)	4200 (1600-4800)
Rated Input-Heating	W	720 (300-1250)	980 (300-1280)
Rated Current Heating	A	3.2	4.3
Voltage, Frequency, Phase	V - Hz - Ph	220-240V-50Hz-1P	220-240V-50Hz-1P
SEER	Cooling	8.8	8.5
SCOP	Heating Average	5.1	5.1
	Heating Warmer	6.0	5.6
Energy Class	Cooling	A+++	A+++
	Heating Average	A+++	A+++
	Heating Warmer	A+++	A+++
Moisture Removal	l/h	0.9	1.2
Air flow			
Air Circulation (H/HM/M/ML/L)	m ³ /h	620/590/560/520/480/440	660/630/600/570/520/470
Noise power/pressure			
Indoor Unit Noise Level - Sound Power	dB (A)	53	54
Indoor Unit Noise Level - Sound Pressure (H/HM/M/ML/L/Quiet)	dB (A)	38/35/34/31/29/25	38/36/33/32/30/25
Outdoor Unit Noise Level - Sound Power	dB (A)	60	61
Outdoor Unit Noise Level - Sound Pressure	dB (A)	50	50
Refrigerant			
Refrigerant		R32	R32
Refrigerant charge volume	g	860	860
Connecting Pipe Diameter			
Liquid Pipe	inch (mm)	1/4 (6.35)	1/4 (6.35)
Gas Pipe	inch (mm)	3/8 (9.52)	3/8 (9.52)
Max length of pipe	m	20	20
Max height difference	m	10	10
Dimensions			
Net Dimensions - Indoor Unit	WxHxD (mm)	877x301x194	877x301x194
Net Dimensions - Outdoor Unit	WxHxD (mm)	810x585x280	810x585x280
Net Weight - Indoor Unit	kg	10	10
Net Weight - Outdoor Unit	kg	33	33
Packing Dimensions - Indoor Unit	WxHxD (mm)	980x390x300	980x390x300
Packing Dimensions - Outdoor Unit	WxHxD (mm)	940x630x385	940x630x385
Gross Weight - Indoor Unit	kg	12.5	12.5
Gross Weight - Outdoor Unit	kg	37	37
Loading Capacity (20'/40'/40'HC)	sets	86/180/210	86/180/210
Operating temperature			
Operating Temp Range	Cooling (°C)	-15 °C - 50 °C	-15 °C - 50 °C
	Heating (°C)	-22 °C - 24 °C	-22 °C - 24 °C
Useful area			
Recommended max. installation area* (ceiling height 2.4 m)	m ²	14	24

* Recommended installation area depends on the building insulation and potential heat sources in the building.

Technical specifications

Energy Pro X (white)

R32 Full DC Inverter SCOP 5.1

A+++ / A+++



RCH-RTY3 Remote controller



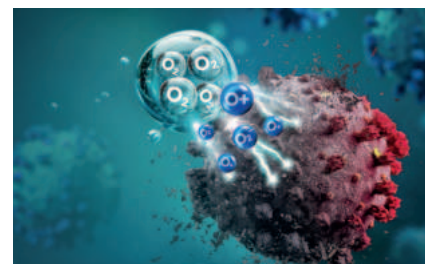
YXE-C01U1(E) Wired controller (optional)



Power statistic display



Smart Eye



HI-NANO sterilization

- 3D Air Intake
- Cooling/Heating capacity display
- HI-NANO Sterilization
- 4-in-1 filter & active carbon filter
- Dual Self clean (indoor/outdoor)
- Anti-bacteria Fin
- Anti-mold
- Smart Eye
- TMS Comfort Control System
- AI Smart
- WiFi Control
- Voice Control
- 4D Auto-swing
- Ceiling & Floor Airflow
- Comfortable Sleep Four Modes
- 18 dB
- Humidity Control
- Timer 24 h
- Super Cool
- 8 °C Heating
- Heating at -22 °C
- Child Lock
- Universal Unit
- Wired Controller optional
- Room card control optional
- Full DC Inverter
- Self-diagnosis
- Outdoor Unit Chasis Heater
- High Energy Efficiency
- Economy mode operation
- Power statistic display

Set model name		QH25XV3A	QH35XV3A
Model name	Indoor Unit	QH25XV3AG	QH35XV3AG
	Outdoor Unit	QG25XV0EW	QG35XV0EW
Model code	Indoor Unit	20013307	20013458
	Outdoor Unit	20009638	20009639
Cooling Capacity	W	2600 (1000-4000)	3500 (1000-4400)
Rated Input-Cooling	W	535 (180-1050)	790 (180-900)
Rated Current Cooling	A	2.5	3.5
Heating Capacity	W	3200 (1600-4200)	4200 (1600-4800)
Rated Input-Heating	W	720 (300-1250)	980 (300-1280)
Rated Current Heating	A	3.2	4.3
Voltage, Frequency, Phase	V - Hz - Ph	220-240V-50Hz-1P	220-240V-50Hz-1P
SEER	Cooling	8.8	8.5
SCOP	Heating Average	5.1	5.1
	Heating Warmer	6.0	5.6
Energy Class	Cooling	A+++	A+++
	Heating Average	A+++	A+++
	Heating Warmer	A+++	A+++
Moisture Removal	l/h	0.9	1.2
Air flow			
Air Circulation (H/HM/M/ML/L)	m ³ /h	620/590/560/520/480/440	660/630/600/570/520/470
Noise power/pressure			
Indoor Unit Noise Level - Sound Power	dB (A)	53	54
Indoor Unit Noise Level - Sound Pressure (H/HM/M/ML/L/Quiet)	dB (A)	38/35/34/31/29/25	38/36/33/32/30/25
Outdoor Unit Noise Level - Sound Power	dB (A)	60	61
Outdoor Unit Noise Level - Sound Pressure	dB (A)	50	50
Refrigerant			
Refrigerant		R32	R32
Refrigerant charge volume	g	860	860
Connecting Pipe Diameter			
Liquid Pipe	inch (mm)	1/4 (6.35)	1/4 (6.35)
Gas Pipe	inch (mm)	3/8 (9.52)	3/8 (9.52)
Max length of pipe	m	20	20
Max height difference	m	10	10
Dimensions			
Net Dimensions - Indoor Unit	WxHxD (mm)	877×301×194	877×301×194
Net Dimensions - Outdoor Unit	WxHxD (mm)	810×585×280	810×585×280
Net Weight - Indoor Unit	kg	10	10
Net Weight - Outdoor Unit	kg	33	33
Packing Dimensions - Indoor Unit	WxHxD (mm)	980×390×300	980×390×300
Packing Dimensions - Outdoor Unit	WxHxD (mm)	940×630×385	940×630×385
Gross Weight - Indoor Unit	kg	12.5	12.5
Gross Weight - Outdoor Unit	kg	37	37
Loading Capacity (20'/40'/40'HC)	sets	86/180/210	86/180/210
Operating temperature			
Operating Temp Range	Cooling (°C)	-15 °C - 50 °C	-15 °C - 50 °C
	Heating (°C)	-22 °C - 24 °C	-22 °C - 24 °C
Useful area			
Recommended max. installation area* (ceiling height 2.4 m)	m ²	14	24

* Recommended installation area depends on the building insulation and potential heat sources in the building.