

Specifications




Console R32

- SPI Ioniser (included).
- Slim design: only 100 mm in width.
- Built-in electronic expansion valve (EEV) for refrigerant flow control (2000-step).

- Two separate air outlets, upper (cooling) and bottom (heating) to avoid stratification.
- Long-life washable permanent filter.
- Auto Restart function.



Indoor Unit		AC026RNJDKG/EU	AC035RNJDKG/EU	AC052RNJDKG/EU
Outdoor Unit - Mono-Phase		AC026RXADKG/EU	AC035RXADKG/EU	AC525RXADKG/EU
Outdoor Unit - Tri-Phase				
Capacity				
Cooling (Min/Nominal/Max)	kW	1.0/2.6/3.4	1.0/2.6/3.4	1.9/5.0/5.5
Heating @ +7 °C (Min/Nominal/Max)	kW	1.0/3.5/4.2	1.1/4.0/4.6	1.5/5.6/6.5
Heating @ -5 °C	kW	3.4	3.9	5.5
Heating @ -15 °C	kW	3.00	3.50	4.90
Performance				
Energy Efficiency Cooling	SEER ¹	W/W 6.4/ A++	6.1/ A++	5.9/ A+
	Power Consumption	kWh/a 142	201	297
	Pdesignc	kW 2.6	3.5	5.0
	EER	W/W 3.61	3.12	2.79
Energy Efficiency Heating	SCOP ¹	W/W 4.2/ A+	4.1/ A+	4.0/ A+
	Power Consumption	kWh/a 667	683	840
	Pdesignh (average)	kW 2.0	2.0	2.4
	COP ¹	W/W 3.30	3.07	3.01
Airflow Rate	Indoor Unit (H/M/L)	m ³ /min 7.5/6.8/6.0	8.5/7.2/6.2	9.4/8.4/7.4
Sound Power	Indoor Unit	dB(A) 53	55	60
	Outdoor Unit	dB(A) 59	61	62
Sound Pressure	Indoor Unit (H/M/L/Silent)	dB(A) 36/31/26/23	38/34/30/24	43/39/35/32
	Outdoor Unit (H/L)	dB(A) 47/46	48/48	48/48
Fan/Outdoor Unit	Type	Turbo	Turbo	Turbo
	Power	W 37	35	35
	Number of Fans	-	1	1
External Static Pressure	Min/Std/Max	Pa		
Operating Temperature Range	Cooling	°C -15-46	-15-46	-15-50
	Heating	°C -20.0-24.0	-20.0-24.0	-20.0-24.0
Electrical Data				
Power Source	Indoor Unit	Φ, #, V, Hz 1Φ, 2, 220-240 V, 50 Hz	1Φ, 2, 220-240 V, 50 Hz	1Φ, 2, 220-240 V, 50 Hz
	Outdoor Unit Mono-Phase	Φ, #, V, Hz 1Φ, 2, 220-240 V, 50 Hz	1Φ, 2, 220-240 V, 50 Hz	1Φ, 2, 220-240 V, 50 Hz
	Outdoor Unit Tri-Phase	Φ, #, V, Hz		
Compressor Type	Outdoor Unit	Type Single BLDC	Single BLDC	Twin BLDC
Power (Min/Nominal/Max)	Cooling	kW 0.23/0.72/1.20	0.25/1.12/1.50	0.25/1.79/2.20
	Heating	kW 0.21/1.06/1.45	0.21/1.30/1.80	0.25/1.86/2.50
Current Input	Cooling (Min/Std/Max)	A 1.6/3.6/5.5	1.6/5.5/7.5	2.6/8.0/10.0
	Heating (Min/Std/Max)	A 1.3/5.0/7.0	1.3/5.9/10.5	2.3/8.3/14.0
	Cooling - Tri-Phase (Min/Std/Max)	A		
	Heating - Tri-Phase (Min/Std/Max)	A		
Dimensions				
Net Dimensions (W x H x D)	Indoor Unit	mm 720 x 199 x 620	720 x 199 x 620	720 x 199 x 620
	Outdoor Unit	mm 790 x 548 x 285	790 x 548 x 285	880 x 638 x 310
Net Weight	Indoor Unit	kg 16.0	16.0	16.0
	Outdoor Unit	kg 32.5	35.5	46.5
Refrigerant	Type	R32 (contains fluorinated greenhouse gases. GWP = 675)		
	Factory Charging	kg 0.9/20 m	0.9/20 m	1.2/10 m
	Charging Ton equivalent CO ₂	tCO ₂ e 0.61	0.61	0.81
	Additional Refrigerant Charging	g/m -	-	15
Piping Connections	Liquid Pipe	ø, inch 1/4	1/4	1/4
	Gas Pipe	ø, inch 3/8	3/8	1/2
Piping Length	Min/Max	m 3/20	3/20	3/30
Piping Height	Max	m 15	15	20
Piping Connections	Drain Pipe	ø, mm ID 18	ID 18	ID 18

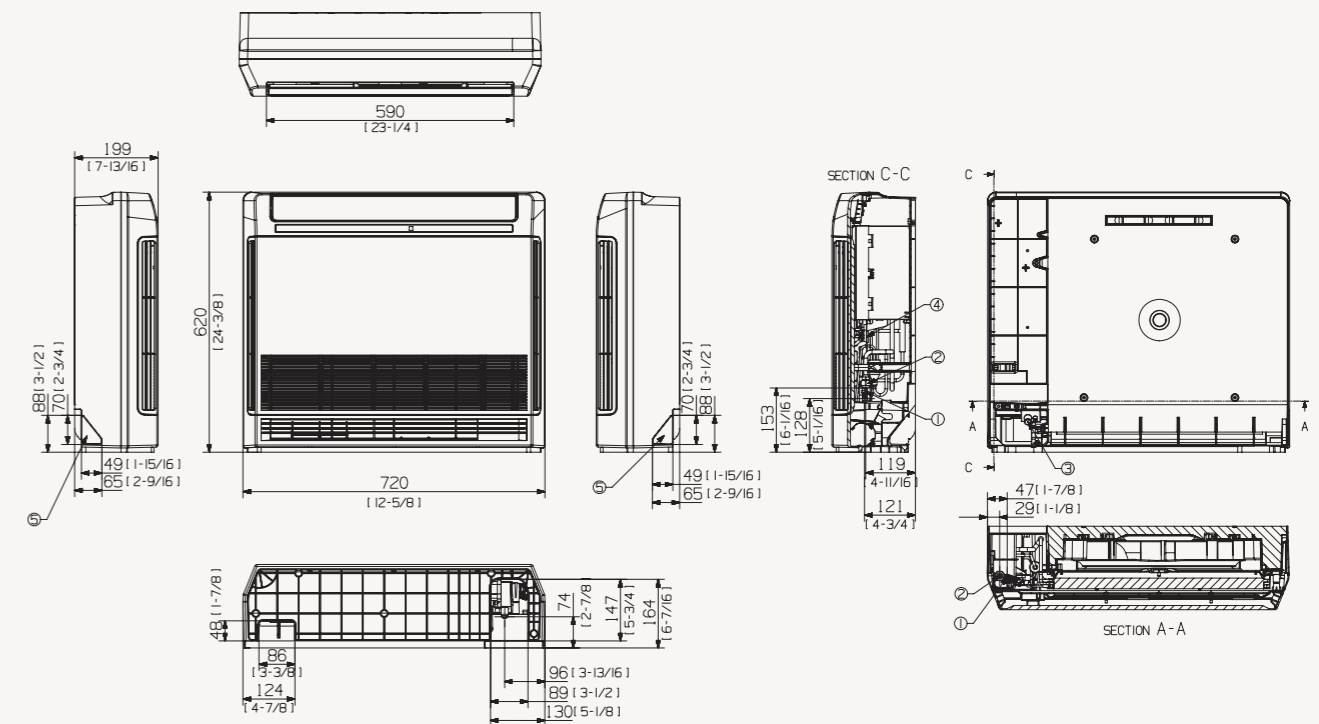
Accessories	
	Touch Controller MWR-SH11N
	Advanced Wired Controller MWR-WG00JN/MWR-WG00KN
	Wi-Fi Kit MIM-H04EN
	External Thermostat MRW-TA

¹ Energy labels as shown are according to EU No 626/2011 (LOT10) label classification 2019, on a scale from D to A+++.

Dimensional drawings

Console

AC026/035/052*NJDK*/EU



NO	Name	Description	
		AC026*NJDK*/EU	AC035*NJDK*/EU AC052*NJDK*/EU
1	Liquid piping	ø6.35 (1/4)	
2	Gas piping	ø9.52 (3/8)	ø12.70 (1/2)
3	Condensation drain piping	ID 18 [11/16] Hose	
4	Power supply/communication wiring conduits		
5	Condensation drain piping		